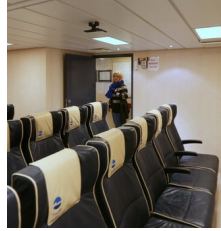
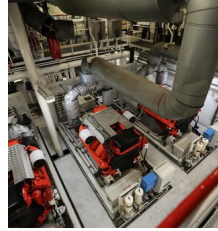


M/V THOR ALPHA

Well-equipped escort/support vessels



Thor Alpha, purpose built support/escort ship, built in 2008 in Mest shipyard, Faroe Islands. Classed DNV

SPECIFICATIONS

Name

M/V Thor Alpha

Call sign

OZ 2070

Home port

Hósvík, Faroe Islands

Flag

Faroese

MMSI

231 074 000

IMO no

9458559

Class

DNV + 1A1 E0 SF

Built

2008

GT

1051

NT

315

DW

1600 ton

Light ship weight

700 ton

LOA

55.10 m

LBP

50.56 m

Breadth moulded

12.50 m

Depth boat deck

8.00 m

Depth main deck

5.50 m

Draft

4.85 m

Main engine

Diesel - electric

AUX. engine**Cargo on deck**

- Deck cargo: 100 ton
- Deck area: 320 m²

Holds

Cargo hold on deck 24 m² cooling room and 16 m² freezing room

Bollard pull

19 ton

Accommodation

- 16
- 34 reclining seats

Deck equipment

- Deck crane: ABAS 5 ton SWL 1.8-16 m
- Rope winch: 1,5 ton
- Capstan: 4 x 5 ton
- 2 Anchor winches
- Towing hook: 30 ton SWL
- Davits: 1 x Vestdavit PLR - 10002 for workboat - SWL 11,000 kg; 1 x Vestdavit PL - 1500 for Rescueboat - SWL 1,500 kg
- Bunker winch

MOB boat

Norsafe MIDGET 530 MK II Diesel Jet Rescue Boat, capacity 6 persons, 72 Hp inboard diesel engine waterjet

Sewage Treatment plant

DVZ-SKA 40 "Biomaster"

Safety Equipment

- Liferafts: 6 x Viking 25 DK SOLAS- 25 pax
- Lifejackets: 104 x Merman 16 A SOLAS
- Immersion suits: 54 x Viking PS 5002 SOLAS

FRC safety equipment

- 3 x PS 4170 SOLAS FRC working suits
- 4 x Crewsaver Crewfit Tween 2010 inflatable lifejackets
- 3 x Jofa 390 R Helmets

Firefighting equipment

Clean Agent FS49c2

Scania type DI16 075M 4 x 596kW

Generators

Norhavn GASI 16-07 SES 4 x 440 kW/1800 o/min.
Make: Marelli

Speed

- Max: 8 m³/ 24 @ 11.5 knots
- Economy: 4 m³/ 24 @ 8.5 - 9.0 knots (3 engines)
- Chase: 1.8 m³/ 24 @ 4.5 - 5.0 knots (2 engines)

Propellers

2 X Rolls Royce Azimuth Thrusters Aquamasters
US 105 CRP 2 x 650 KW

Steering gear

2 x Azimuts steering speed 15Sec/ 360°

Thruster

Water Jet Pump / Schottel SPJ 82 SD 1x360 KW

Water generator

ENWA MT 4500 SRH 3m³ / 24 hrs

Bunkers

- Heavy fuel 992 m³, Diesel oil 556 m³
- Lubes: Lub. 5200 Ltrs Hydr. 5200 ltrs
- Fresh water: 69 m³

Radio and navigation equipment

GMDSS equipment:

A3 Furuno FS-2570C 150W MF/HF SSB Transceiver.
Furuno FM-8800S VHF-DSC Transceiver.Radio
Ocean RO 4700 VHF Transceiver.
Furuno NX-700-B Navtex Receiver.
Furuno Felcom-15 Inmarsat-C.
SSAS UPG for Furuno Felcom-15.
McMurdo E-5-A EPIRB. McMurdo E-5-M EPIRB.
McMurdo S4 SART.
Portable VHF: 2 x McMurdo R2 GMDSS + 1 x ENTEL

Radars:

FAR-2137S/IMO S-band 30 kW with 12 ft antenna.
FAR-2117/IMO X-band 12 kW with 6.5 ft antenna.

Echo sounder:

Furuno FE-700/200 IMO.
Furuno DS-80 speed-log

Navigation:

Furuno FA-150 AIS Transceiver.
Furuno GP-150 GPS-Professional navigator.
Furuno GP-170 GPS-Professional navigator.
MaxSea Commander software.
MaxSea tracking-modul for ARPA and AIS-traget.
Computer for Max-Sea

Gyro and Auto Pilot:

Anschuetz standard 22 Gyro-compass.
2 x Anschuetz Digital Autopilot Pilotstar D.
Furuno SC-110 Satellite compass. RD-30 Remote display.

Bridge Alarm:

Uni-Safe Bridge alarm

Other:

Emergency communication system
wheelhouse/engine.
Communication system round the ship.
Telular SX5D GSM-phone with telefax.
Icom portable UHF-transceiver.
Safety helmet, with Peltor head-set.

Pumps

- Fuel Oil: 2 x 120 m³/hour
- Fresh Water: 1 x 50 m³/hour

Oily water separator

RWO Marine Water technolgy

Communication

- Email: thoralpha@thor.fo
- Tel. IP Bridge: + 44 20 78 58 56 99
- Tel. IP Engine: + 44 20 78 58 56 98
- FBB: +870 77 31 54 563
- InmarsatC: 423107410
- GMDSS: +881 641 709 921

